

DGY70H

HYDRAULIC PIPELAYER

全液压吊管机

■ 全液压控制

Hydraulic Control

■ 最大起重量：70,000kg

Max.Lifting Capacity: 70,000kg 154,323lb

■ 发动机：康明斯 NTA855-C360

Engine: Cummins NTA855-C360

■ 整机重量：51,000kg

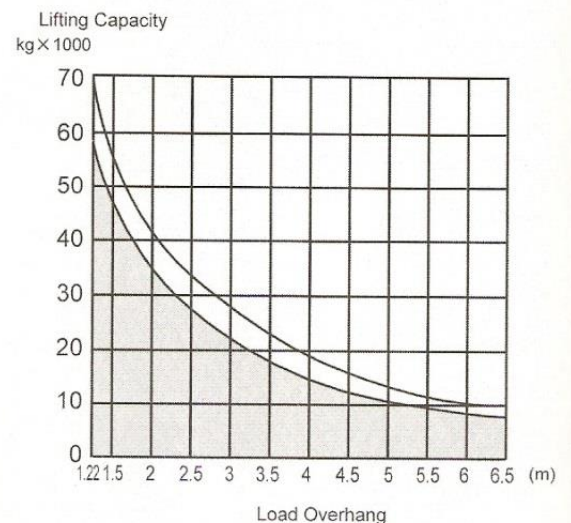
Operating Weight: 51,000kg 112,436lb



主要特点 Main Features

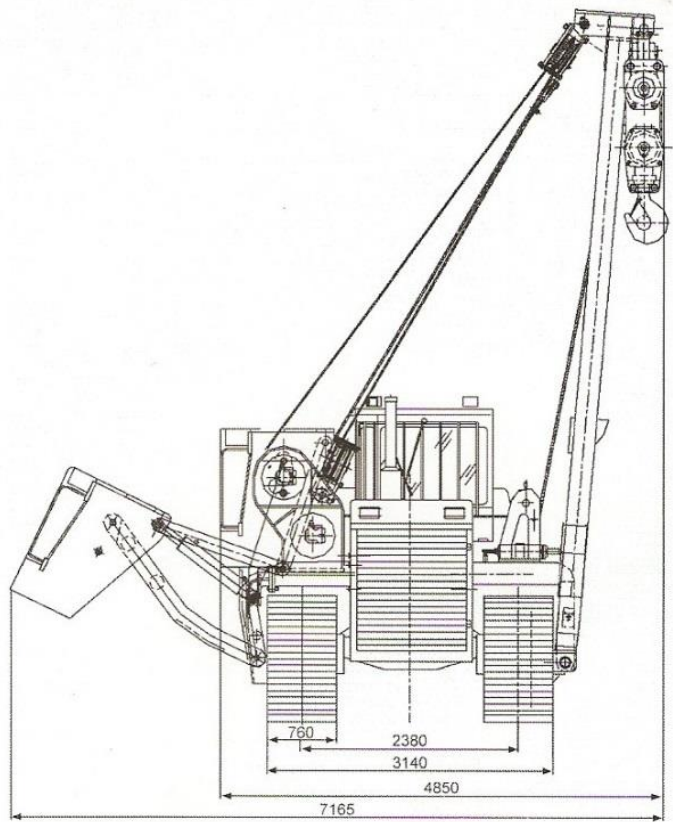
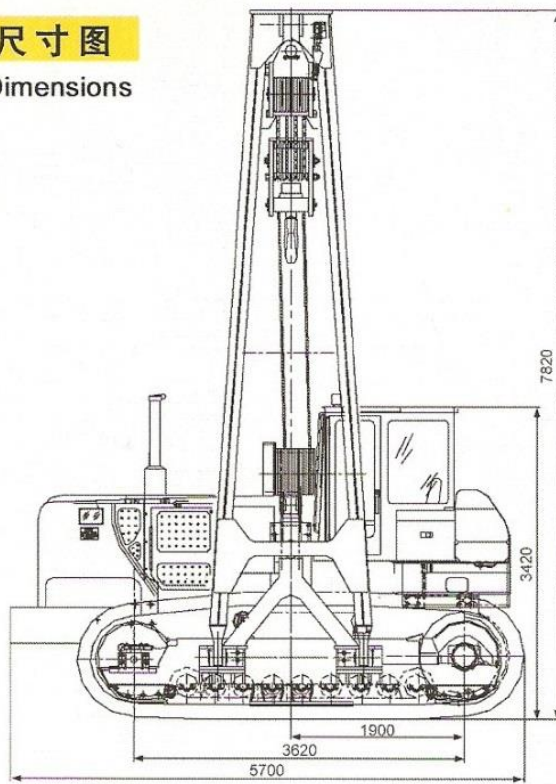
- 采用吊管机专用底盘，选用吊管机专用支重轮。
- 康明斯涡轮增压中冷发动机，功率扭矩储备系数大，可适应各种工况。
- 配重采用四连杆机构，外摆距离远，整机重量减轻。
- 安全保护齐全，完善，配有全自动力限器，高度限位器，吊臂缓冲限位等安全装置，使作业更安全。
- 模块化设计，便于装拆，拆卸后外形尺寸小，便于运输。
- 针对寒带、热带和沙漠等不同环境提供一体化解决方案，适应不同地区工作。
- Adopt special designed chassis and track roller for pipelayer.
- Turbo intercooler Cummins Engine, which reserves enough power to meet any tough working conditions.
- The counterweight adopt four-bar linkage design which has excellent stability and more extending distance, thus reduce the whole weight of the machine.
- Well-equipped safety device such as automatic load moment limiter, hoisting height limit switch, Boom buffer limiter device, make operation more safe.
- Modular design has facilitated removal/installation of components and shorten machine downtime.
- Customized integrated solution for different working environment such as the frigid zone, the tropics, deserts and marsh area.

起重性能曲线 Lifting Performance Curve



外形尺寸图

Overall Dimensions



主要技术参数 Main Specifications

最大起重量	Lifting capacity at tipping point	70,000kg	154,323lb
吊臂最小幅度最大起重力矩	Max. lifting moment at min. load overhang	836kN.m (686kN*1.22m)	617,292 lb-ft (154,323lb*4ft)
吊臂最大幅度最大起重力矩	Max. lifting moment at max. load overhang	650kN.m (100kN*6.5m)	479,840 lb-ft (479,840lb*21.33ft)
吊臂长度	Boom Length	7m	23ft
吊钩最大起升高度	Max. lifting height of the hook	5.37m	17.62ft
起升速度 (8 倍率)	Hoisting speed (eight part line)	6m/min	19.68ft/min
变幅时间	Boom elevating time	60s	
底盘型号	Model of chassis	DGY-70	
发动机型号	Model of diesel engine	康明斯 NTA855-C360	CUMMINS NTA855-C360
额定功率	Rated power	239kW	320hp
液压泵型号	Model of oil hydraulic pump	CBY4100/4100/2040	
系统额定工作压力	Rated working pressure of system	20,000kPa	2,900psi
起升机构	Hook winch	液压驱动、行星传动、自由落钩功能 Hydraulic driven, Planetary transmission, Free-fall function	
额定单绳拉力 (第三层)	Rated pulling force of system (third layer)	100kN	22,496lb
钢丝绳直径	Diameter of wire rope	φ 22mm	φ 0.866in
变幅机构	Boom winch	液压驱动、行星传动 Hydraulically driven, Planetary transmission	
额定单绳拉力 (第二层)	Rated pulling strength of system (second layer)	80kN	17.992lb
钢丝绳直径	Diameter of wire rope	φ 22mm	φ 0.866in
适用环境温度	Temperature of surroundings	-20°C ~ +40°C	-4°F ~ 104°F
外形尺寸 (长*宽*高) Overall dimension (Length*Width*Height)	带吊臂时 With boom	5.7*4.85*7.82m	18.7*15.9*25.7ft
	运输时 Without boom	5.7*3.15*3.42m	18.7*10.3*11.2ft
平均接地比压 Ground pressure	空载时 Without load	92kPa	13.34psi
整体总质量	Operating weight	51,000kg	112,436lb